

B54BMP-Series Inline Sight Glass

Applications

- Used in sanitary processes to view fluids.
- They are found in the food processing, beverage, winery, brewery, pet product, and industrial markets.

Sizes

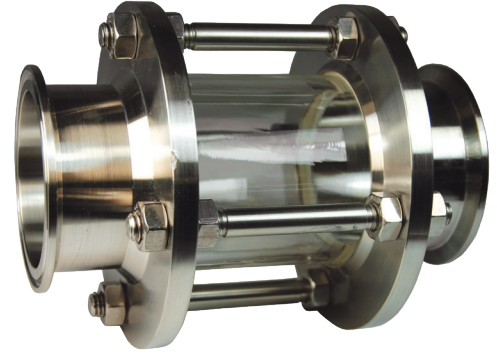
- 1" to 6"

Features

- Various end configurations available
 - Clamp, weld, bevel seat, John Perry, I-line, and Q-line

Specifications

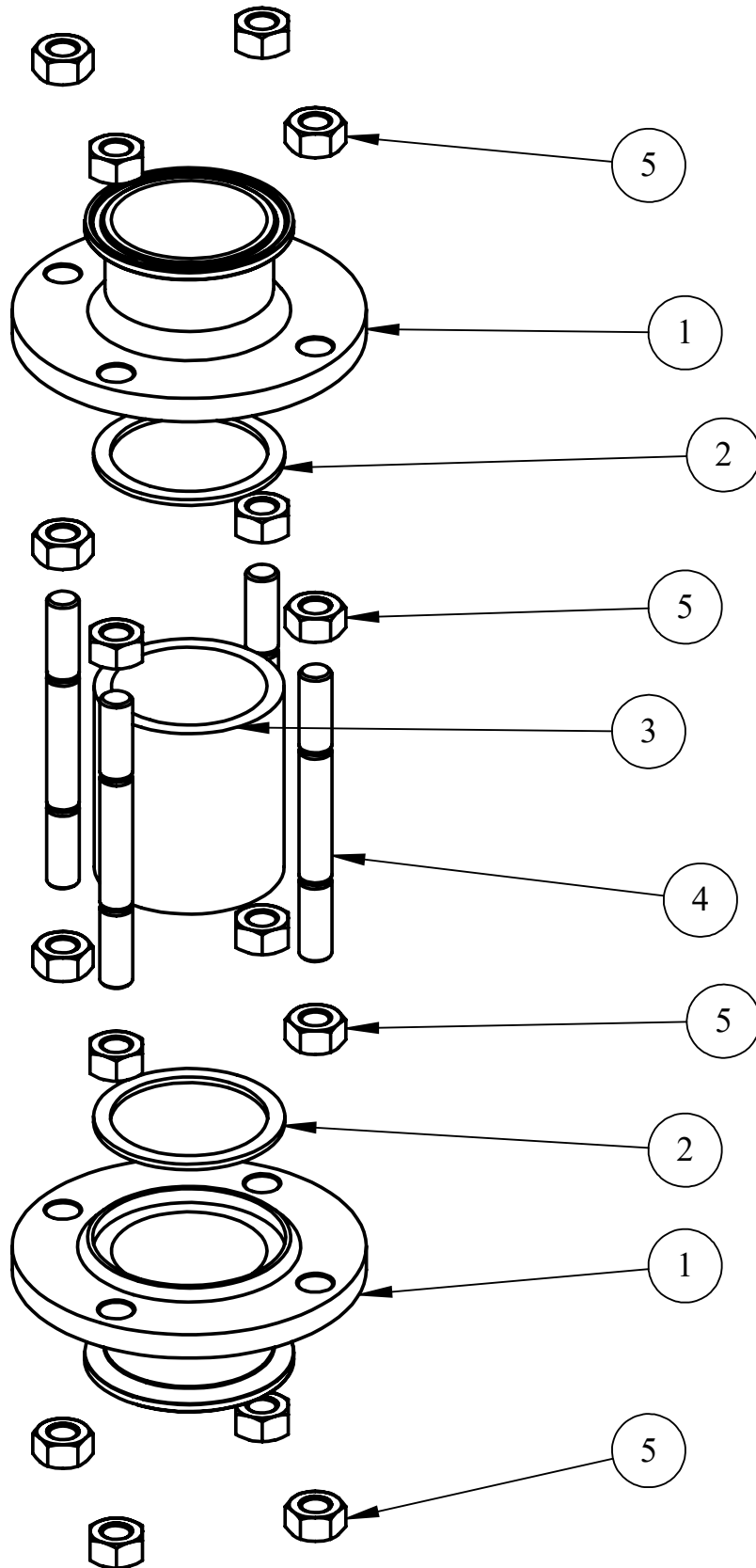
- Standard connection: clamp
- Sight glass working pressure:
 - 1": **145 PSI**
 - 1-1/2": **145 PSI**
 - 2": **145 PSI**
 - 2-1/2": **120 PSI**
 - 3": **120 PSI**
 - 4": **95 PSI**
 - 6": **80 PSI**
- Maximum operating temperature: **200°F (93°C)**
- Materials of construction
 - Product contact metal components: 316L stainless steel
 - Non-product contact metal components: 316L stainless steel
 - Product contact sight window: borosilicate glass or polycarbonate
 - Product contact seals: nitrile rubber, FKM, EPDM
- Surface finish
 - Product contact metal components: ≤ 32 Ra I.D. and O.D.



B54BMP-Series Inline Sight Glass - Part Number Key

B54BMP-Series Inline Sight Glass Part Number Key Example: B54BMP-R100__		Series	Connections	Material	Size	Sight Glass Material	Surface Finish	Elastomer
		B54BMP	-	R	100			
Series	Code							
B54BMP	B54BMP							
Connections	Code							
Tri-clamp	-							
Weld	B							
Threaded bevel	T							
Plain bevel with nut	P							
Female I-line	F							
Male I-line	M							
John Perry plain	J							
John Perry threaded	H							
Q-line	G							
Material	Code							
316L stainless steel	R							
Size	Code							
1"	100							
1-1/2"	150							
2"	200							
2-1/2"	250							
3"	300							
4"	400							
6"	600							
Sight Glass Material	Code							
Borosilicate glass	blank							
Polycarbonate	LX							
Surface Finish	Code							
32 Ra (I.D. mech. polish)	blank							
25 Ra (I.D. mech. polish)	B							
20 Ra (I.D. mech. polish)	C							
15 Ra (I.D. mech. polish)	D							
Elastomer	Code							
Nitrile rubber (standard)	blank							
FKM	V							
EPDM	E							

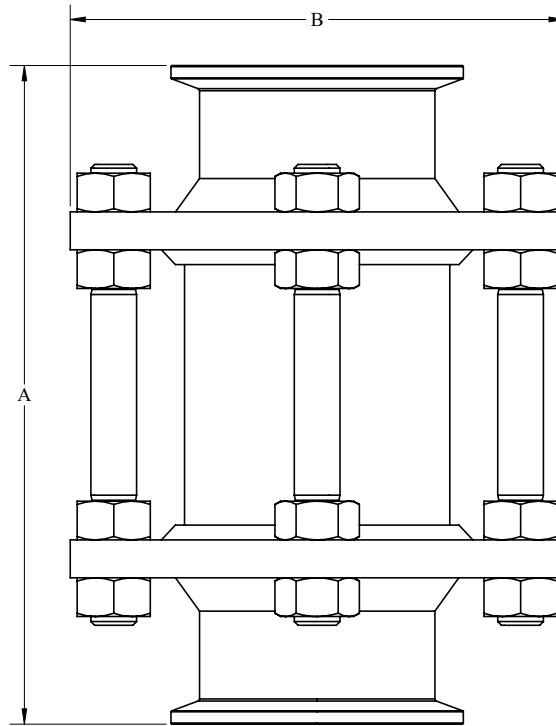
B54BMP-Series Inline Sight Glass - Bill of Materials



B54BMP-Series Inline Sight Glass - Bill of Materials

Item	Size	Part #	Description	Material	Qty
1	1"	B54BMP-1-100	body, tri-clamp	316L SS	2
	1-1/2"	B54BMP-1-150	body, tri-clamp	316L SS	2
	2"	B54BMP-1-200	body, tri-clamp	316L SS	2
	2-1/2"	B54BMP-1-250	body, tri-clamp	316L SS	2
	3"	B54BMP-1-300	body, tri-clamp	316L SS	2
	4"	B54BMP-1-400	body, tri-clamp	316L SS	2
	6"	B54BMP-1-600	body, tri-clamp	316L SS	2
2	1"	B54BMP-SK100	elastomer kit (2-pcs)	Nitrile rubber	1
		B54BMP-EK100	elastomer kit (2-pcs)	EPDM	1
		B54BMP-VK100	elastomer kit (2-pcs)	FKM	1
	1-1/2"	B54BMP-SK150	elastomer kit (2-pcs)	Nitrile rubber	1
		B54BMP-EK150	elastomer kit (2-pcs)	EPDM	1
		B54BMP-VK150	elastomer kit (2-pcs)	FKM	1
	2"	B54BMP-SK200	elastomer kit (2-pcs)	Nitrile rubber	1
		B54BMP-EK200	elastomer kit (2-pcs)	EPDM	1
		B54BMP-VK200	elastomer kit (2-pcs)	FKM	1
	2-1/2"	B54BMP-SK250	elastomer kit (2-pcs)	Nitrile rubber	1
		B54BMP-EK250	elastomer kit (2-pcs)	EPDM	1
		B54BMP-VK250	elastomer kit (2-pcs)	FKM	1
	3"	B54BMP-SK300	elastomer kit (2-pcs)	Nitrile rubber	1
		B54BMP-EK300	elastomer kit (2-pcs)	EPDM	1
		B54BMP-VK300	elastomer kit (2-pcs)	FKM	1
	4"	B54BMP-SK400	elastomer kit (2-pcs)	Nitrile rubber	1
		B54BMP-EK400	elastomer kit (2-pcs)	EPDM	1
		B54BMP-VK400	elastomer kit (2-pcs)	FKM	1
6"	B54BMP-SK600	elastomer kit (2-pcs)	Nitrile rubber	1	
	B54BMP-EK600	elastomer kit (2-pcs)	EPDM	1	
	B54BMP-VK600	elastomer kit (2-pcs)	FKM	1	
3	1"	B54G-P100	insert	Borosilicate	1
		B54BMP-LX100	insert	Polycarbonate	1
	1-1/2"	B54G-P150	insert	Borosilicate	1
		B54BMP-LX150	insert	Polycarbonate	1
	2"	B54G-P200	insert	Borosilicate	1
		B54BMP-LX200	insert	Polycarbonate	1
	2-1/2"	B54G-P250	insert	Borosilicate	1
		B54BMP-LX250	insert	Polycarbonate	1
	3"	B54G-P300	insert	Borosilicate	1
		B54BMP-LX300	insert	Polycarbonate	1
	4"	B54G-P400	insert	Borosilicate	1
		B54BMP-LX400	insert	Polycarbonate	1
6"	B54G-P600	insert	Borosilicate	1	
	B54BMP-LX600	insert	Polycarbonate	1	
4	1"	B54BMP-4-100	body bolt, 3/8" UNC, 100 mm long	316L SS	4
	1-1/2"	B54BMP-4-150	body bolt, 3/8" UNC, 100 mm long	316L SS	4
	2"	B54BMP-4-200	body bolt, 3/8" UNC, 100 mm long	316L SS	4
	2-1/2"	B54BMP-4-250	body bolt, 3/8" UNC, 110 mm long	316L SS	4
	3"	B54BMP-4-300	body bolt, 1/2" UNC, 149 mm long	316L SS	4
	4"	B54BMP-4-400	body bolt, 1/2" UNC, 149 mm long	316L SS	6
	6"	B54BMP-4-600	body bolt, 1/2" UNC, 149 mm long	316L SS	8
5	1"	B54BMP-5-100	nut, 3/8" UNC	316L SS	4
	1-1/2"	B54BMP-5-150	nut, 3/8" UNC	316L SS	4
	2"	B54BMP-5-200	nut, 3/8" UNC	316L SS	4
	2-1/2"	B54BMP-5-250	nut, 3/8" UNC	316L SS	4
	3"	B54BMP-5-300	nut, 1/2" UNC	316L SS	4
	4"	B54BMP-5-400	nut, 1/2" UNC	316L SS	6
	6"	B54BMP-5-600	nut, 1/2" UNC	316L SS	8

B54BMP-Series Inline Sight Glass - Dimensions



Size	A (in)	B (in)
1"	5.6	3.3
1-1/2"	5.6	4.0
2"	5.6	4.3
2-1/2"	6.1	4.8
3"	7.3	5.5
4"	7.4	6.5
6"	7.6	9.5

Repair Kits

Size	Nitrile Rubber Seal Kit ¹	FKM Seal Kit ²	Borosilicate Glass Replacement	Polycarbonate Replacement
1"	B54BMP-SK100	B54BMP-VK100	B54G-P100	B54BMP-LX100
1-1/2"	B54BMP-SK150	B54BMP-VK150	B54G-P150	B54BMP-LX150
2"	B54BMP-SK200	B54BMP-VK200	B54G-P200	B54BMP-LX200
2-1/2"	B54BMP-SK250	B54BMP-VK250	B54G-P250	B54BMP-LX250
3"	B54BMP-SK300	B54BMP-VK300	B54G-P300	B54BMP-LX300
4"	B54BMP-SK400	B54BMP-VK400	B54G-P400	B54BMP-LX400
6"	B54BMP-SK600	B54BMP-VK600	B54G-P600	B54BMP-LX600

¹Kit contains (2) black nitrile rubber gaskets

²Kit contains (2) FKM gaskets

Limited Warranty

DIXON VALVE & COUPLING COMPANY, LLC (herein called "Dixon") warrants the products described herein and manufactured by Dixon to be free from defects in material and workmanship for a period of one (1) year from date of shipment by Dixon under normal use and service. Its sole obligation under this warranty being limited to repairing or replacing, as hereinafter provided, at its option any product found to Dixon's satisfaction to be defective upon examination by it, provided that such product shall be returned for inspection to Dixon's factory within three (3) months after discovery of the defect. The repair or replacement of defective products will be made without charge for parts or labor. This warranty shall not apply to: (a) parts or products not manufactured by Dixon, the warranty of such items being limited to the actual warranty extended to Dixon by its supplier; (b) any product that has been subject to abuse, negligence, accident, or misapplication; (c) any product altered or repaired by others than Dixon; and (d) normal maintenance services and the replacement of service items (such as washers, gaskets, and lubricants) made in connection with such services. To the extent permitted by law, this limited warranty shall extend only to the buyer and any other person reasonably expected to use or consume the goods who is injured in person by any breach of the warranty. No action may be brought against Dixon for an alleged breach of warranty unless such action is instituted within one (1) year from the date the cause of action accrues. This limited warranty shall be construed and enforced to the fullest extent allowable by applicable law.

Other than the obligation of Dixon set forth herein, Dixon disclaims all warranties, express or implied, including but not limited to any implied warranties of merchantability or fitness for a particular purpose, and any other obligation or liability. The foregoing constitutes Dixon's sole obligation with respect to damages, whether direct, incidental, or consequential, resulting from the use or performance of the product.

Some products and sizes may be discontinued when stock is depleted or may require a minimum quantity for ordering.

Limits of Liability

This brochure is intended as a product offering. It is not intended to be a user or technical manual. Information in this brochure is subject to change without notice. All users and distributors of products sold through this brochure should contact Dixon with questions of use, compatibilities, coupling procedures, and life of product. Our full-time engineering and test staff are always available to recommend uses and to assist distributors and users with any questions.



Safety



Safety logos, which appear throughout our catalog, are used as a reminder that the user should carefully review for the appropriateness of the product for the media, application, and environment in which it will be used.

NOTE: Because of the health hazards associated with contamination and lead content in drinking water systems, Dixon couplings, unless otherwise specifically approved, are not recommended for potable water service and should not be used in applications where drinking water will contact the wetted surfaces of the coupling.

All Dixon products are shipped in cartons with the following warning:

"WARNING: This product contains lead, a chemical known to the State of California to cause cancer and birth defects or other reproductive harm."

Trademark

Delrin® and Zytel® are registered trademarks of E.I. duPont Nemours and Company.

Kalrez® is a registered trademark of DuPont Dow Elastomers.

All other trademarks appearing in the Dixon illustrated product list are the property of their respective owners.

Copyright

Copyright © 2023 by Dixon Valve & Coupling Company, LLC

All rights reserved. This book is copyrighted material. Use, reproduction or copying of it by anyone other than Dixon® is strictly forbidden without its express written consent.

NOTE: Reasonable care has been taken in preparing this catalog. Dixon Valve & Coupling Company, LLC reserves the right to make corrections.

